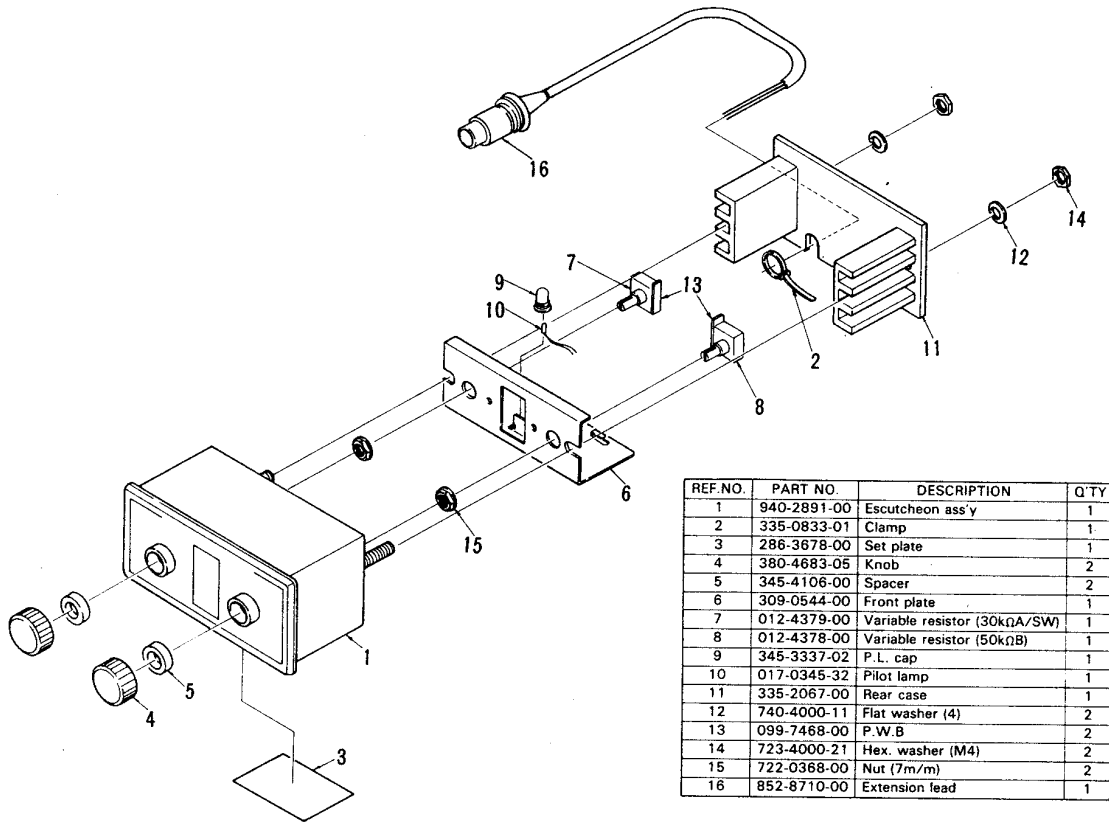
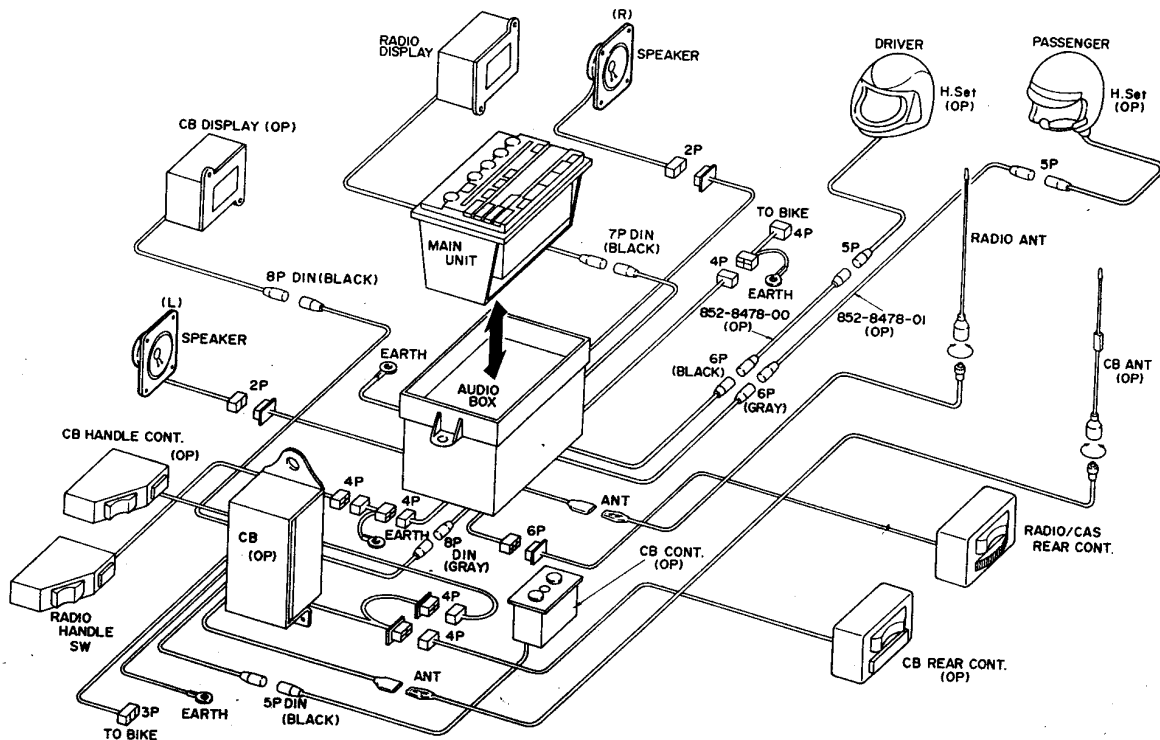


■ CB CONTROLLER: KKA-145-100

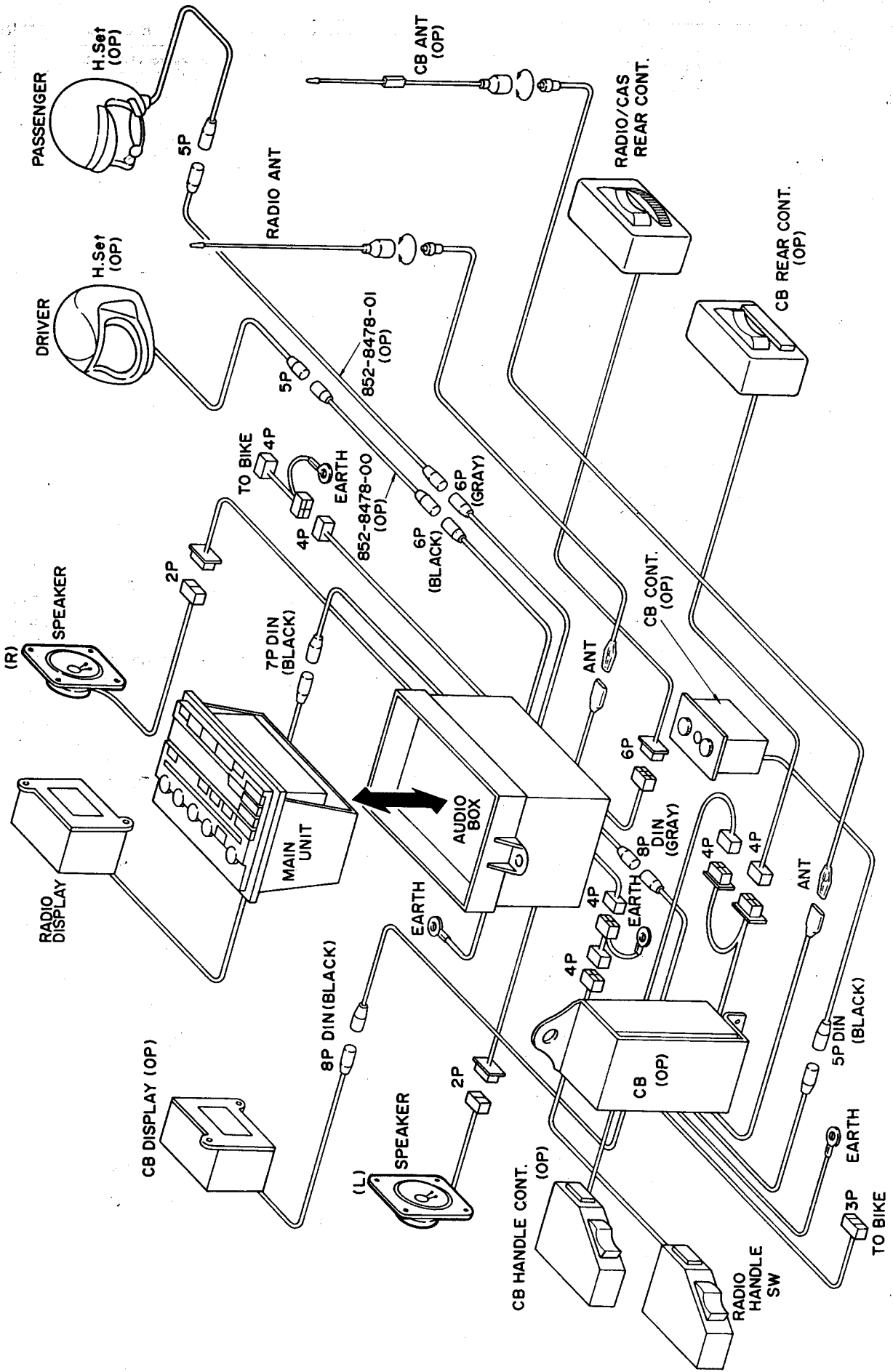


REF. NO.	PART NO.	DESCRIPTION	QTY
1	940-2891-00	Escutcheon ass'y	1
2	335-0833-01	Clamp	1
3	286-3678-00	Set plate	1
4	380-4683-05	Knob	2
5	345-4106-00	Spacer	2
6	309-0544-00	Front plate	1
7	012-4379-00	Variable resistor (30kΩ/SW)	1
8	012-4378-00	Variable resistor (50kΩB)	1
9	345-3337-02	P.L. cap	1
10	017-0345-32	Pilot lamp	1
11	335-2067-00	Rear case	1
12	740-4000-11	Flat washer (4)	2
13	099-7468-00	P.W.B	2
14	723-4000-21	Hex. washer (M4)	2
15	722-0368-00	Nut (7m/m)	2
16	852-8710-00	Extension lead	1

■ OVERALL CONNECTIONS:



OVERALL CONNECTIONS:



CONNECTION DIAGRAM

CB Transceiver Side

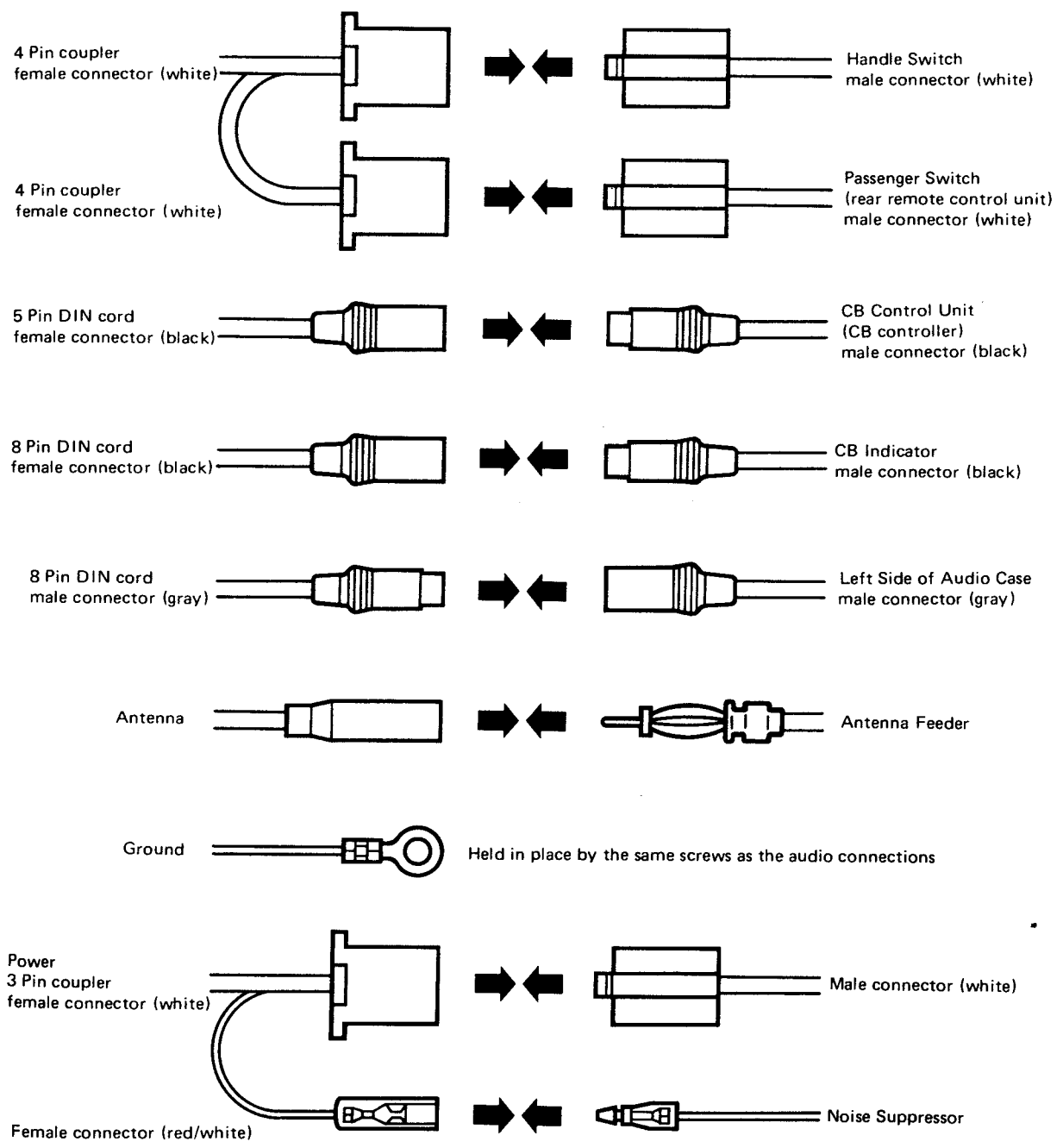
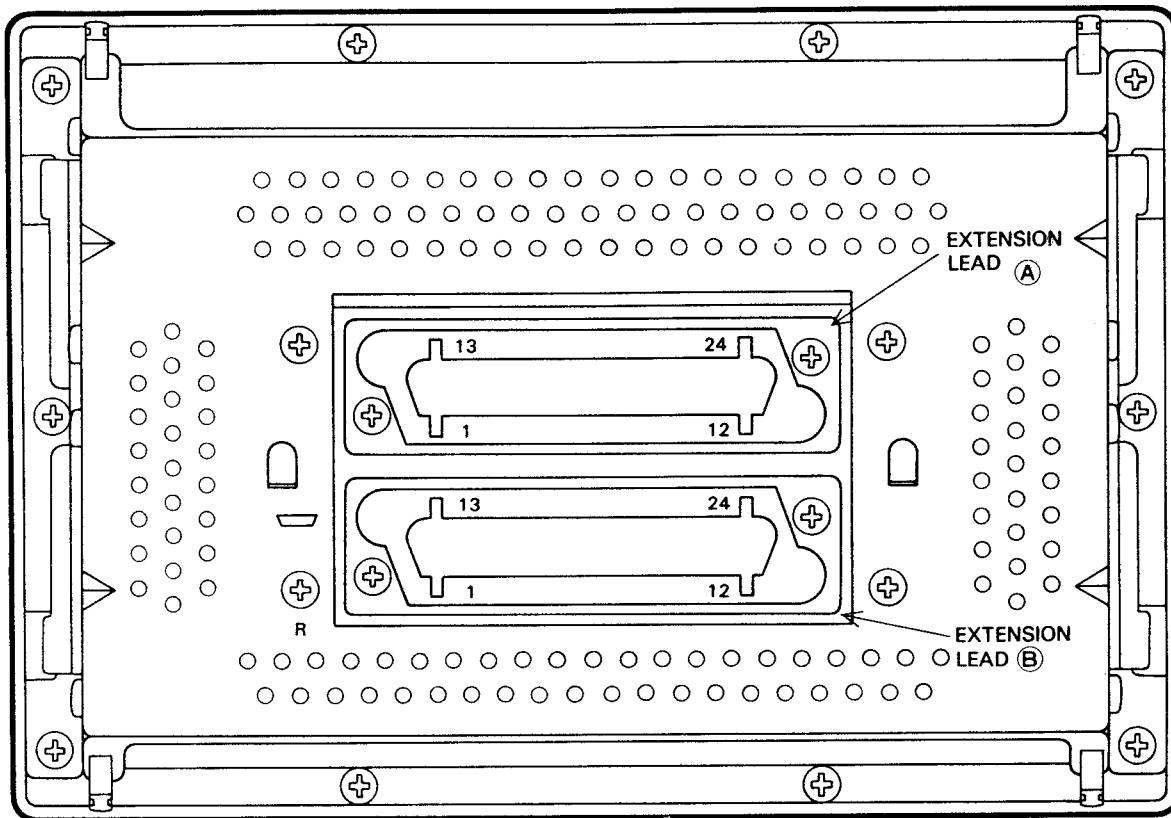


Fig. 1



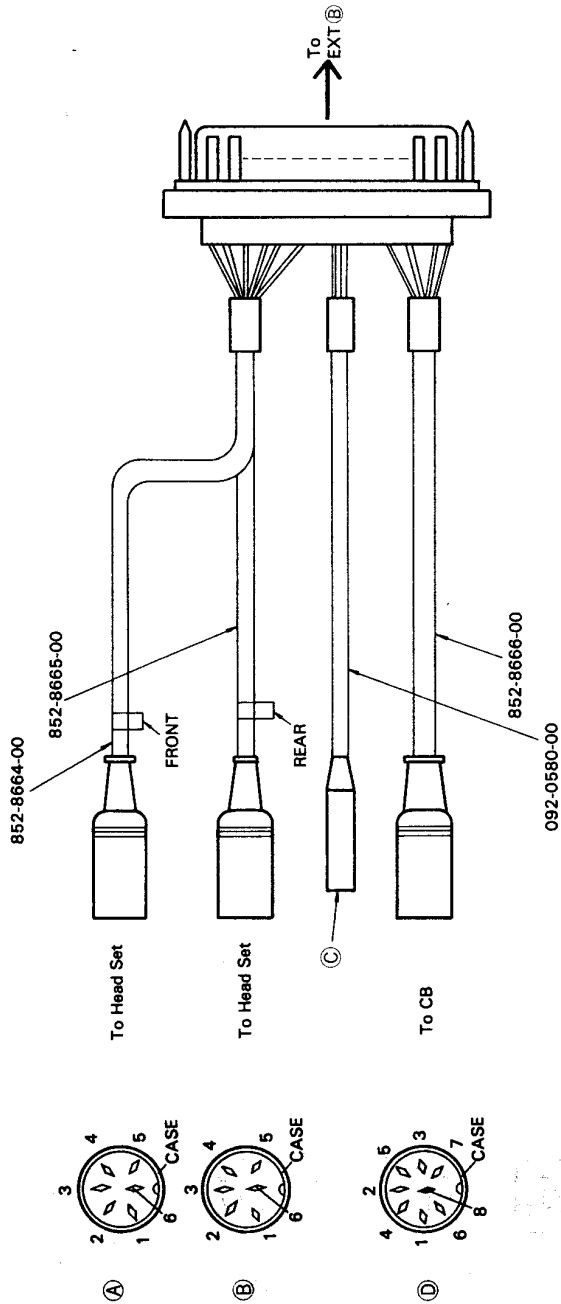
EXTENSION LEAD A

Pin No.	Plug (from P.W.B.)	Color	Description
1	6 - ①	RED	} + 12V Input
2	6 - ②	RED	
3	9 - ①	BLU	AVC Input
4	---	BLK	Bonding Wire
5	7 - ②	BLU	SP. Rch ⊕
6	8 - ②	GRY	SP. Lch ⊕
7	9 - ⑤	BLK	Passenger VOL 1
8	9 - ③	GRY	Passenger VOL 3
9	10 - ②	BRN	Handle Auto Up
10	10 - ③	ORG	Passenger 12V
11	11 - ⑥	BLU	Indicator Data
12	11 - ④	YEL	Indicator Load
13	11 - ③	ORG	Indicator + 5V
14	8 - ③	BLK	} Earth Main
15	8 - ④	BLK	
16	9 - ⑥	BRN	Start Mute.
17	---	BLK	Bonding Wire
18	7 - ①	PUR	SP. Rch ⊖
19	8 - ①	WHT	SP. Lch ⊖
20	9 - ④	WHT	Passenger VOL 2
21	9 - ②	PUR	Handle Mute
22	10 - ①	BRN	Handle Auto Down
23	11 - ②	RED	Indicator Illumination
24	11 - ⑤	GRN	Indicator Clock
	11 - ①	BRN	Indicator Earth
	---	BLK	Bonding Wire
	11 - ⑦	PUR	Indicator Head Set

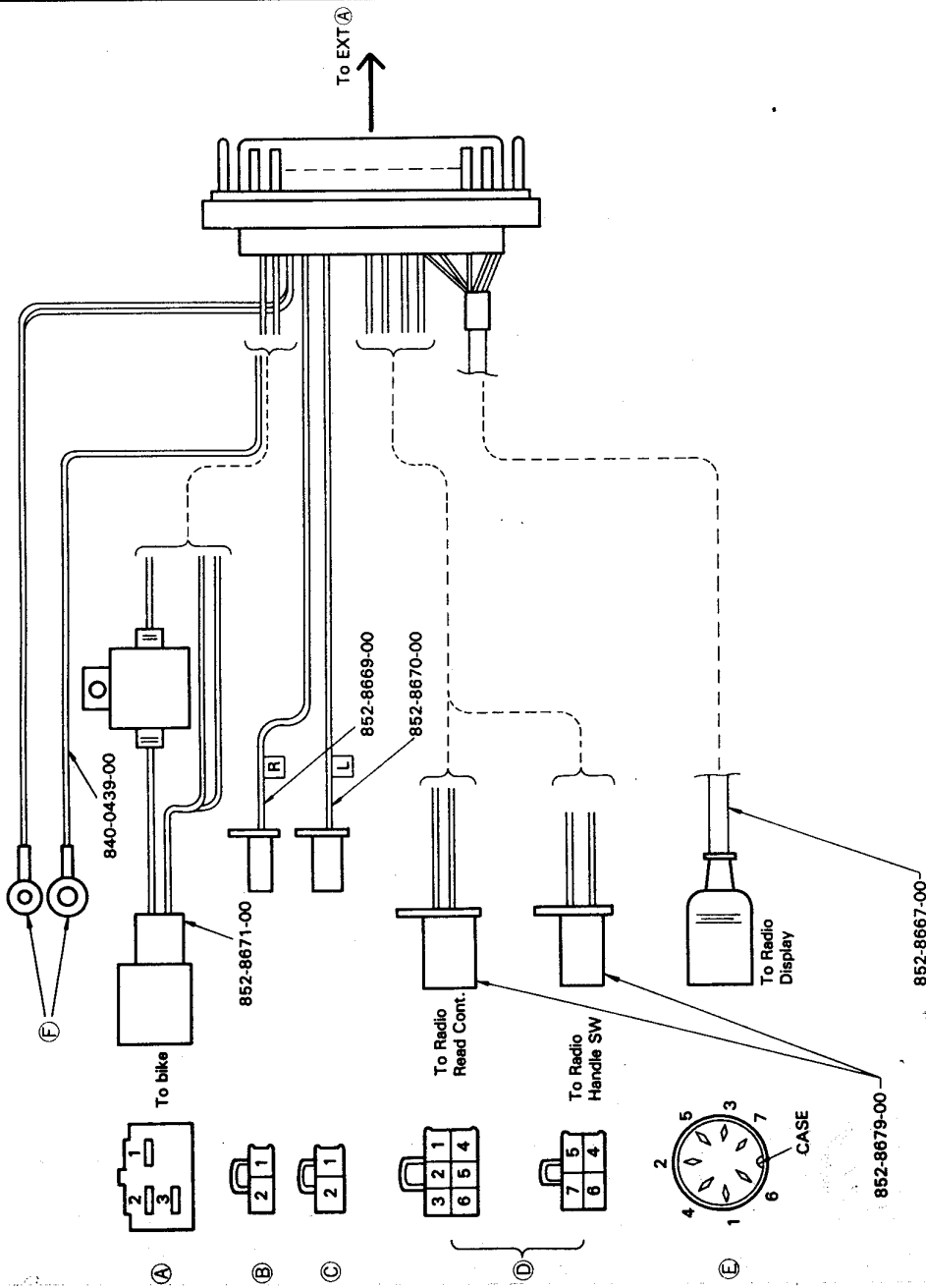
EXTENSION LEAD B

Pin No.	Plug (from P.W.B.)	Color	Description
1	1 - ②	RED	Din Case Earth
2	2 - ②	RED	Driver Earth (Head Set)
3	2 - ④	YEL	Driver SP. Lch (Head Set)
4	2 - ③	ORG	Driver SP. Rch (Head Set)
5	4 - ④	Shield	Driver Mic (Earth)
6	4 - ③	Hot	Driver Mic
7	3 - ①	Hot	ANT
8	4 - ①	Hot	CB MIC
9	4 - ⑦	ORG	Press to talk
10	5 - ③	ORG	
11	5 - ②	RED	CB Monitor
12	5 - ⑤	GRN	CB Remocon 12V
13	1 - ①	BRN	Earth CB Unit
14	1 - ③	ORG	Din Case Earth
15	2 - ①	BRN	Passenger Earth (Head Set)
16	2 - ⑥	BLU	Passenger SP. Lch (Head Set)
17	2 - ⑤	GRN	Passenger SP. Rch (Head Set)
18	4 - ⑥	Shield	Passenger Mic (Earth)
19	4 - ⑤	Hot	Passenger Mic
20	3 - ②	Shield	Ant. Earth
21	4 - ②	Shield	CB MIC (Earth)
22	---	---	
23	5 - ④	YEL	CB Audio Frequency Out
24	5 - ①	BRN	Squelch Signal

EXTENSION LEAD (B) (852-8672-00):



EXTENSION LEAD (A) (852-8673-01):



Pin No.	Color	Description	Connector No.
1	Yellow/Green	Start Mute	14
2	Red/Black	+ 12V Input	1
3	Blue/Red	AVC Input	2
1	Gray	SP, Rich ⊕	4
2	Purple	SP, Rich ⊖	16
1	Blue	SP, Lch ⊕	5
2	Green	SP, Lch ⊖	17
1	Green/Red	Passenger Vol 1	6
2	Green/Black	Passenger Vol 2	18
3	Green/Blue	Passenger Vol 3	7
4	Green/Yellow	Indicator Auto Up	8
5	Green/White	Indicator Auto Down	20
6	Black/White	Passenger 12V	9
7	Blue/Green	Indicator Mute	19
6	Yellow	Indicator Load	11
1	Brown	Indicator Illumination	21
4	Green	Indicator Head Set	24
2	White	Indicator Earth	23
5	Red	Indicator Clock	22
3	Black	Indicator Data	10
7	Blue	Indicator + 5V	12
Case	Shield	Indicator Earth	23
	Black	Earth	13
	Black	Earth	13, 15

- 22. Connect the respective mounted components to the CB transceiver kit (1-4) using the wires illustrated in Fig. 23.

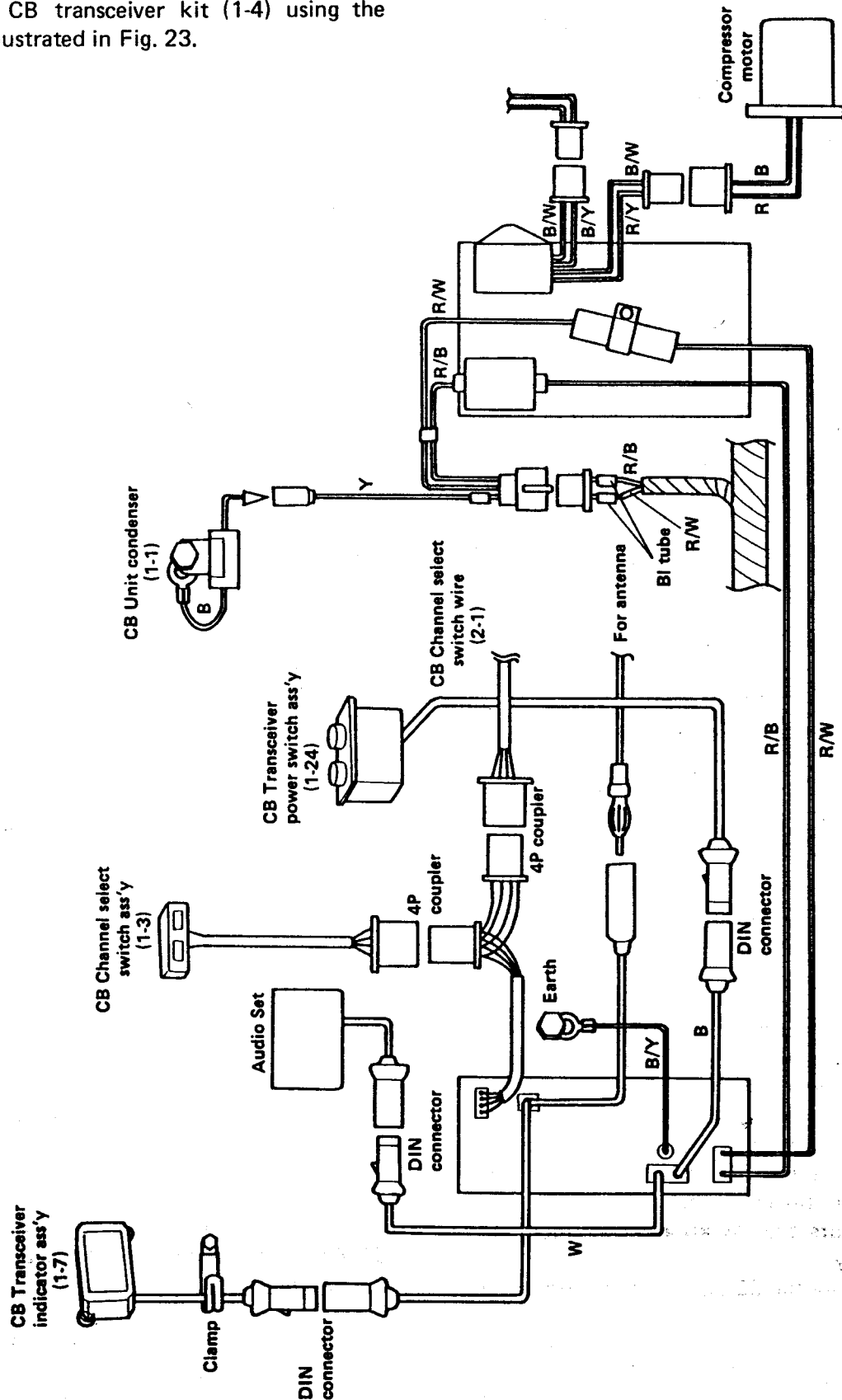


Fig. 23